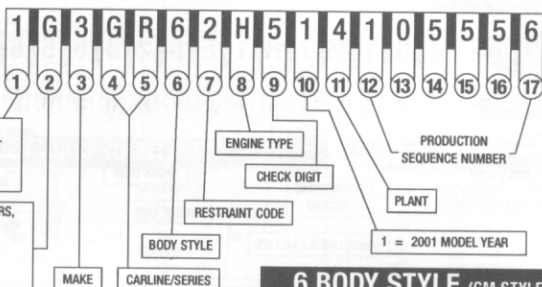


GM

2001 PASSENGER CAR VIN SYSTEM

TYPICAL VIN

POSITION NO.



1,4 = U.S. BUILT
2 = CANADIAN BUILT
3 = MEXICO BUILT
W = GERMAN BUILT

G = GENERAL MOTORS,
GENASYS L.C.
Y = NUMMI
C = CAMI
O = OPEL

MAKE

CARLINE/SERIES

RESTRAINT CODE

BODY STYLE

ENGINE TYPE

CHECK DIGIT

PRODUCTION
SEQUENCE NUMBER

PLANT

1 = 2001 MODEL YEAR

3 MAKE

1 - CHEVROLET
2 - PONTIAC
3 - OLDSMOBILE
3 - TOYOTA (4G3)
4 - BUICK
6 - CADILLAC
7 - GM OF CANADA
8 - SATURN

4-5 CARLINE/SERIES

CHEVROLET
F/P - CAMARO SPORT
COUPE & CONV.
J/C - CAVALIER
J/F - CAVALIER Z24, SEDAN
J/G - TOYOTA (COUPE & SEDAN)
J/H - TOYOTA (COUPE & SEDAN)
M/R - METRO
N/D - MALIBU
N/E - MALIBU LS
S/K - PRIZM
W/F - IMPALA
W/H - IMPALA LS
W/L - LUMINA
W/W - MONTE CARLO LS
W/X - MONTE CARLO SS
Y/Y - CORVETTE

BUICK
C/U - PARK AVENUE-ULTRA
C/W - PARK AVENUE
H/P - LE SABRE CUSTOM
H/R - LE SABRE LIMITED
W/B - REGAL LS
W/F - REGAL GS
W/S - CENTURY CUSTOM
W/Y - CENTURY LIMITED

CADILLAC
E/L - ELDORADO
E/T - ELDORADO TOURING
K/D - DEVILLE
K/E - DEVILLE LUXURY
K/F - DEVILLE TOURING
K/S - SLS
K/Y - STS
W/R - CATERA

SATURN
J/R - LS MANUAL
J/S - LS AUTO
J/T - LS1 MANUAL
J/U - LS1 AUTO, LW1
J/W - LS2, LW2
Z/F - SL
Z/G - SL1 MANUAL
Z/H - SL1 AUTO
Z/J - SW2 MANUAL
Z/L - SL2 MANUAL
Z/K - SL2 AUTO
Z/M - SW1
Z/N - SC1 MANUAL, SW2 AUTO
Z/P - SC1 AUTO
Z/R - SC2 MANUAL
Z/Y - SC2 AUTO

GM OF CANADA
M/R - FIREFLY

PONTIAC
F/S - FIREBIRD & CONV.
F/V - FORMULA & CONV.
H/X - BONNEVILLE SE
H/Y - BONNEVILLE SLE
H/Z - BONNEVILLE SSEI
J/B - SUNFIRE
J/D - SUNFIRE
N/E - GRAND AM SE
N/F - GRAND AM SE1
N/G - GRAND AM SE2
N/V - GRAND AM GT1
N/W - GRAND AM GT
W/J - GRAND PRIX SE
W/K - GRAND PRIX SE1
W/P - GRAND PRIX GT
W/R - GRAND PRIX GTP

OLDSMOBILE
G/R - AURORA
G/S - AURORA
N/F - ALERO GLS
N/K - ALERO GX
N/L - ALERO GL
W/H - INTRIGUE GX
W/S - INTRIGUE GL
W/X - INTRIGUE GLS

6 BODY STYLE (GM STYLE)

1 TWO-DOOR COUPE (27, 37, 47, 57)
2 TWO-DOOR (07, 08, 77, 87)
3 TWO-DOOR CONVERTIBLE (67)
5 FOUR-DOOR SEDAN (19, 69)
6 FOUR-DOOR SEDAN (29, 68)
8 FOUR-DOOR STATION WAGON (35)

7 RESTRAINT CODES

1 ACTIVE (MANUAL) BELTS
2 ACTIVE (MANUAL) BELTS W/DRIVER & PASSENGER INFLATABLE RESTRAINT SYSTEM (FRONTAL)
4 ACTIVE (MANUAL) BELTS W/DRIVER & PASSENGER INFLATABLE RESTRAINT SYSTEM (FRONTAL & SIDE)
5 ACTIVE (MANUAL) BELTS W/DRIVER & PASSENGER INFLATABLE RESTRAINTS, FRONTAL AND DRIVER INFLATABLE RESTRAINTS - SIDE
6 ACTIVE (MANUAL) BELTS W/DRIVER & PASSENGER INFLATABLE RESTRAINTS (FRONTAL & SIDE), AUTOMATIC OCCUPANT SENSOR (PASSENGER)
7 ACTIVE (MANUAL) BELTS W/DRIVER & PASSENGER INFLATABLE RESTRAINTS (FRONTAL & SIDE), REAR PASSENGER INFLATABLE RESTRAINTS (SIDE)

8 ENGINE TYPE

CODE	ENG. OPT.	DISP.	CYL.	FUEL* SYSTEM	DIV. USAGE	PROD. IN*
C	L47	4.0L	V8	SFI	3	U
E	LA1	3.4L	V6	MFI	1,2,3	U
F	L61	2.2L	L4	MFI	8	U
G	LS1	5.7L	V8	MFI	1,2	U
H	LX5	3.5L	V6	MFI	3	U
J	L68	3.1L	V6	SFI	1,3,4	U
K	L36	3.8L	V6	MFI	1,2,4	U
R	L81	3.0L	V6	MFI	6,8	U,G
S	LS6	5.7L	V8	SFI	1	U
T	LD9	2.4L	L4	MFI	1,2,3,4,BJ	U
Y	LD8	4.6L	V8	MFI	6	U
1	L67	3.8L	V6	MFI	2,4	U
2	LY8	1.3L	L4	MFI	1,7	J
4	LN2	2.2L	L4	MFI	1,2	U
6	LP2	1.0L	L3	TBI	1,7	J
7	LL0	1.9L	L4	SFI	8	U
8	LV6	1.8L	L4	MFI	1	J
8	L24	1.9L	L4	SFI	8	U
9	L37	4.6L	V8	MFI	6	U

*LEGEND
U = U.S.
J = JAPAN
G = GERMANY

MFI = MULTIPORT FUEL INJECTION
SFI = SEQUENTIAL FUEL INJECTION
TBI = THROTTLE BODY INJECTION
BJ = TOYOTA BADGED J-CAR

11 PLANT

B - BALTIMORE (T&B)	MD	G - SILAO	MEXICO	T - SHREVEPORT	LA	1 - OSHAWA #2	ON	7 - LORDSTOWN	OH
B - LANSING (GENASYS)	MI	H - FLINT	MI	U - HAMTRAC	MI	1 - WENTZVILLE (T&B)	MO	7 - FUJISAWA	JAPAN
C - LANSING	MI	J - JAMESVILLE (T&B)	WI	Y - WILMINGTON	DE	2 - MORAIN (T&B)	OH	8 - SHREVEPORT (T&B)	LA
D - DORAVILLE	GA	K - LINDEN (T&B)	NJ	Z - FREMONT	CA	2 - STE THERESE	PQ		
E - PONTIAC EAST (T&B)	MI	M - LANSING	MI	Z - SPRING HILL	TN	3 - KAWASAKI	JAPAN	8 - TILLSONBURG (CANEXPO)	ON
F - FAIRFAX II	KS	M - TOLUCA	MEXICO	Z - FORT WAYNE (T&B)	IN	4 - ORION	MI	9 - OSHAWA #1	ON
F - FLINT (T&B)	MI	R - ARLINGTON (T&B)	TX			5 - BOWLING GREEN	KY		
		R - RUSSELSHEIM	GER	O - LANSING	MI	6 - INGERSOLL	ON		
		S - RAMOS ARIZPE	MEXICO	1 - OSHAWA (T&B)	ON	6 - OKLAHOMA CITY	OK		

The information shown is correct at time of printing, but may be changed during model year.

General Motors Corporation, Service Operations, 30501 Van Dyke, Warren, MI 48090
Litho in U.S.A. 9/00 (810) 947-8772

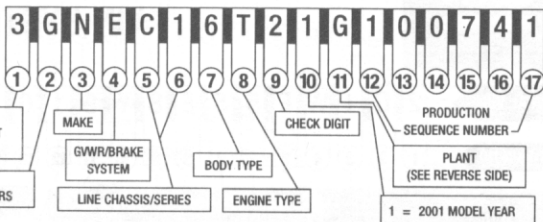
©2000 General Motors Corporation. All Rights Reserved.

GM

2001 LIGHT DUTY TRUCK, MULTIPURPOSE PASSENGER VEHICLE (MPV) AND INCOMPLETE VEHICLE VIN SYSTEM

TYPICAL VIN

POSITION NO.



- 1, 4 = U.S. BUILT
- 2 = CANADIAN BUILT
- 3 = MEXICO BUILT

- C = CAMI
- G = GENERAL MOTORS

MAKE
GVWR/BRAKE SYSTEM

BODY TYPE

LINE CHASSIS/SERIES

ENGINE TYPE

CHECK DIGIT

PRODUCTION SEQUENCE NUMBER
PLANT (SEE REVERSE SIDE)

1 = 2001 MODEL YEAR

3 MAKE

- A - CHEV BUS *
 - B - CHEV INCOMPLETE
 - C - CHEV TRUCK
 - D - GMC INCOMPLETE
 - E - CADILLAC INCOMPLETE
 - G - ISUZU INCOMPLETE
 - H - OLDSMOBILE MPV
 - J - GMC BUS *
 - K - GMC MPV
 - L - BUICK INCOMPLETE
 - M - PONTIAC MPV
 - N - CHEV MPV
 - T - GMC TRUCK
 - Y - CADILLAC MPV
 - Z - PONTIAC SRV (3G7)
- * VAN WITH 4TH SEAT

5-6 LINE CHASSIS/SERIES

CHEVROLET/GMC*

- B/9 INCOMPLETE (CHEVROLET)
- C/1 FULL SIZE TRUCK 4x2, 1500 (1/2 TON)
- C/2 FULL SIZE TRUCK 4x2, 2500 (3/4 TON)
- G/3 FULL SIZE TRUCK 4x2, 3500 (1 TON)
- C/5 GMC 3 TON (MEX ONLY)
- C/6 FULL SIZE TRUCK 4x2, 1500 (1/2 TON) LUXURY
- C/7 FULL SIZE TRUCK 4x2, 2500 (3/4 TON) LUXURY
- C/8 FULL SIZE TRUCK 4x2, 3500 (1 TON) LUXURY
- K/1 FULL SIZE TRUCK 4x2, 1500 (1/2 TON)
- K/2 FULL SIZE TRUCK 4x2, 2500 (3/4 TON)
- K/3 FULL SIZE TRUCK 4x2, 3500 (1 TON)
- K/5 GMC 3 TON (MEX ONLY)
- K/6 FULL SIZE TRUCK 4x2, 1500 (1/2 TON) LUXURY
- K/7 FULL SIZE TRUCK 4x2, 2500 (3/4 TON) LUXURY
- K/8 FULL SIZE TRUCK 4x2, 3500 (1 TON) LUXURY
- E/1 CHEV-TRACKER 4x2, S10 ELECTRIC TRUCK (1/2 TON)
- E/6 CHEV-TRACKER 4x2, LT (B57)
- J/1 CHEV-TRACKER 4x4
- J/6 CHEV-TRACKER 4x4, LT (B57)
- J/7 CHEV-TRACKER 4x4, 2R2 SPORT
- G/1 EXPRESS, SAVANA 4x2, 1500 (1/2 TON)
- G/2 EXPRESS, SAVANA 4x2, 2500 (3/4 TON)
- G/3 EXPRESS, SAVANA 4x2, 3500 (1 TON)
- G/6 EXPRESS, SAVANA 4x2, 1500 (1/2 TON) LUXURY
- G/7 EXPRESS, SAVANA 4x2, 2500 (3/4 TON) LUXURY
- G/8 EXPRESS, SAVANA 4x2, 3500 (1 TON) LUXURY
- M/1 ASTRO, SAFARI VAN 4x2 (1/2 TON)
- M/6 ASTRO, SAFARI VAN 4x2 LUXURY
- L/1 ASTRO, SAFARI VAN 4x4 (1/2 TON)
- L/6 ASTRO, SAFARI VAN 4x4 LUXURY

- S/1 S-10/BLAZER/SONOMA/JIMMY 4x2 (1/2 TON)
 - S/6 S-10/BLAZER/SONOMA/JIMMY 4x2 (1/2 TON) LUXURY
 - T/1 S-10/BLAZER/SONOMA/JIMMY 4x4 (1/2 TON)
 - T/6 S-10/BLAZER/SONOMA/JIMMY 4x4 (1/2 TON) LUXURY
 - U/0 CHEV-VENTURE APV 4x2
 - U/1 CHEV-VENTURE APV 4x2 LUXURY
 - U/2 CHEV-VENTURE APV 4x2 ECONOMY
 - X/0 CHEV-VENTURE APV 4x2 EXT. W/B
 - X/1 CHEV-VENTURE APV 4x2 ECONOMY EXT. W/B
 - X/2 CHEV-VENTURE APV 4x2 ECONOMY EXT. W/B
- BUICK**
- B/9 INCOMPLETE
- CADILLAC**
- H/9 INCOMPLETE
 - K/1 ESCALADE 4x4 1500 (1/2 TON)
 - K/6 ESCALADE 4x4 1500 (1/2 TON) LUXURY
- OLDSMOBILE**
- T/1 BRAVADA 4x4 (1/2 TON)
 - T/6 BRAVADA 4x4 (1/2 TON) LUXURY
 - X/0 SILHOUETTE APV 4x2 EXT. W/B
 - X/1 SILHOUETTE APV 4x2 ECONOMY EXT. W/B
 - X/2 SILHOUETTE APV 4x2 ECONOMY EXT. W/B
- PONTIAC**
- A/0 AZTEK SRV VEHICLE 4x2
 - B/0 AZTEK SRV VEHICLE 4x4
 - U/0 MONTANA APV 4x2
 - U/1 MONTANA APV 4x2 LUXURY
 - U/2 MONTANA APV 4x2 ECONOMY
 - X/0 MONTANA APV 4x2 EXT. W/B
 - X/1 MONTANA APV 4x2 LUXURY EXT. W/B
 - X/2 MONTANA APV 4x2 ECONOMY EXT. W/B

* LINE/CHASSIS DESCRIPTION INCLUDES ALL FULL SIZE CHEVROLET AND GMC TRUCK MODELS

4 GVWR/BRK SYS

CODE	GVWR RANGE (IN POUNDS)	BRAKE SYSTEM
B	3001 - 4000	HYD
C	4001 - 5000	HYD
D*	5001 - 6000	HYD
E**	6001 - 7000	HYD
F**	7001 - 8000	HYD
G	8001 - 9000	HYD
H	9001 - 10000	HYD
J	10001 - 14000	HYD
K	14001 - 16000	HYD
L	16001 - 19500	HYD
M	19501 - 26000	AR/HYD

* BUICK & CHEVROLET COMMERCIAL BODY/CHASSIS
** CADILLAC COMMERCIAL BODY/CHASSIS

7 BODY TYPE

- 0 - CHASSIS ONLY (S/T CHASSIS - POSTAL/COMMERCIAL)
- 0 - COMMERCIAL CHASSIS (CHEVROLET/BUICK/CADILLAC)
- 1 - COMMERCIAL SPECIAL AND RV CUTAWAY (INCLUDES CHEVROLET EXPRESS COMMERCIAL, GMC SAVANA CARGO SPECIAL AND CAMPER SPECIAL)
- 2 - FORWARD CONTROL
- 3 - FOUR-DOOR CAB/UTILITY (INCLUDES BLAZER, JIMMY, BRAVADA, ENVOY, TRACKER, FULL SIZE YUKON, TAHOE, DENALI, ESCALADE AND CREW CAB)
- 3 - FOUR-DOOR ALL PURPOSE VEHICLE (MONTANA, VENTURE, SILHOUETTE), AZTEK (SRV)
- 4 - TWO-DOOR CAB (S10, SONOMA, SIERRA, SILVERADO)
- 5 - VAN (EXPRESS, SAVANA, ASTRO, SAFARI)
- 6 - SUBURBAN/YUKON XL
- 7 - MOTOR HOME CHASSIS
- 8 - TWO-DOOR UTILITY (BLAZER, TRACKER)
- 9 - EXTENDED CAB/EXTENDED VAN (S10, SONOMA, SIERRA, SILVERADO, ASTRO, SAFARI, EXPRESS AND SAVANA)

8 ENGINE TYPE

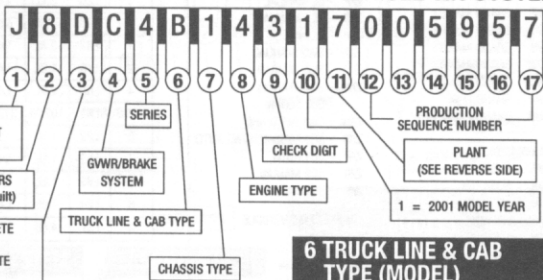
CODE	C	E	F	G	H	J	L	M	R	T	U	V	W	X	Y*	1	4	5	6	9*	
ENGINE OPTION	L34	LA1	L65	L18	LN1	L29	LH3	L30	L31	LM7	LQ4	LR4	L35	LF6	LD8	L57	LB7	LN2	L43	LO1	L37
DISPL. (L)	2.0	3.4	6.5T	8.1	85KW	7.4	4.1	5.0	5.7	5.3	6.0	4.8	4.3	4.6	6.5	6.6T	2.2	2.2	1.6	4.6	
CYLINDERS	L4	V6	V8	V8	312V	V8	L6	V8	V8	V8	V8	V6	V6	V8	V8	V***	L4	E85	L4	V8	
FUEL SYSTEM**	MFI	MFI	DSL	MFI	ELECTRIC	MFI	MFI	CPI	CPI	MFI	MFI	CPI	CPI	MFI	DSL	DSL	DSL	MFI	OFF	MFI	MFI
PRODUCED IN**	J	U	U	U	U	U	U	M	U	U	U	U	U	U	U	U	J	U	U	J	U

* USED ONLY IN BUICK, CHEVROLET & CADILLAC PASSENGER CAR - DERIVED INCOMPLETE VEHICLES.
** LEGEND: U = U.S., J = JAPAN, M = MEXICO, DSL = DIESEL, MFI = MULTIPOINT FUEL INJECTION, CPI = CENTRAL PORT INJECTION, T = TURBO, OFF = COMPATIBLE FLEXIBLE FUEL *** LPG CONVERSION CAN BE ACCOMPLISHED ON ENGINE

2001 MEDIUM DUTY TRUCK AND INCOMPLETE VEHICLE VIN SYSTEM

TYPICAL VIN

POSITION NO.



- 1, 4 = U.S. BUILT
- 2 = CANADIAN BUILT
- J = JAPAN BUILT

- G = GENERAL MOTORS
- 8 = ISUZU (Japan Built)

- B = CHEV INCOMPLETE
- C = CHEV TRUCK
- D = GMC INCOMPLETE
- T = GMC TRUCK

TRUCK LINE & CAB TYPE

CHASSIS TYPE

CHECK DIGIT

ENGINE TYPE

PRODUCTION SEQUENCE NUMBER
PLANT (SEE REVERSE SIDE)

1 = 2001 MODEL YEAR

4 GVWR/BRAKE SYSTEM

CODE	GVWR RANGE (IN POUNDS)	BRAKE SYST.
A	9001 - 10,000	HYD
B	10,001 - 14,000	HYD
C	14,001 - 16,000	HYD
D	14,001 - 16,000	AR
E	16,001 - 19,500	HYD
F	16,001 - 19,500	AR
G	19,501 - 23,500	HYD
H	19,501 - 23,500	AR
J	23,501 - 26,000	HYD
K	23,501 - 26,000	AR
L	26,001 - 33,000	HYD
M	26,001 - 33,000	AR
N	33,001 - 40,500	HYD
P	33,001 - 40,500	AR
R	40,501 - 48,500	HYD
S	40,501 - 48,500	AR
T	48,501 - 58,000	AR
V	58,001 - 69,500	AR
X		GLIDER KIT

5 SERIES

- 4 - 4500 SERIES (W4)
- 5 - 5000 SERIES (C5/W5)
- 6 - 6000 SERIES (C6/FB6/W6)
- 7 - 7000 SERIES (B7/C7/D7/FB7/W7)

6 TRUCK LINE & CAB TYPE (MODEL)

- A - FORWARD/TILTMASTER MEDIUM, TLT, 72.0 BBC (W5)
- B - FORWARD/TILTMASTER MEDIUM, TLT, 67.9 BBC (W4)
- C - T55-T85 MEDIUM, TLT, 86.0 BBC (F6/F7)
- D - C SERIES, (SPECIAL EQPMT OPTION) CREW CAB (C7)
- H - C SERIES CONVENTIONAL, CAB, 106.75 BBC (C6/C7)
- T - L50/COMMERCIAL CHASSIS COWL (B7)

BBC = BUMPER TO BACK OF CAB

7 CHASSIS TYPE

- 0 - GLIDER KIT
- 1 - 4 X 2 (2 AXLES-1 DRIVING)
- 4 - 6 X 4 (3 AXLES-2 DRIVING)

8 ENGINE TYPE

- B - GM 7.4L V8 MFI GASOLINE (L21)
- C - CAT 7.2L L6 TURBO ELECTRONIC (LGS)
- D - GM 7.4L V8 MFI GASOLINE (LP4)
- E - GM 8.1L V8 MFI GASOLINE (L18)
- J - CAT 6.6L 3116 DIESEL (LX0)
- R - GM 5.7L V8 CPI GASOLINE (L31)
- X - GLIDER KIT LESS ENGINE
- 3 - ISUZU 7.8L V6 D-1 TURBO DIESEL (L64)