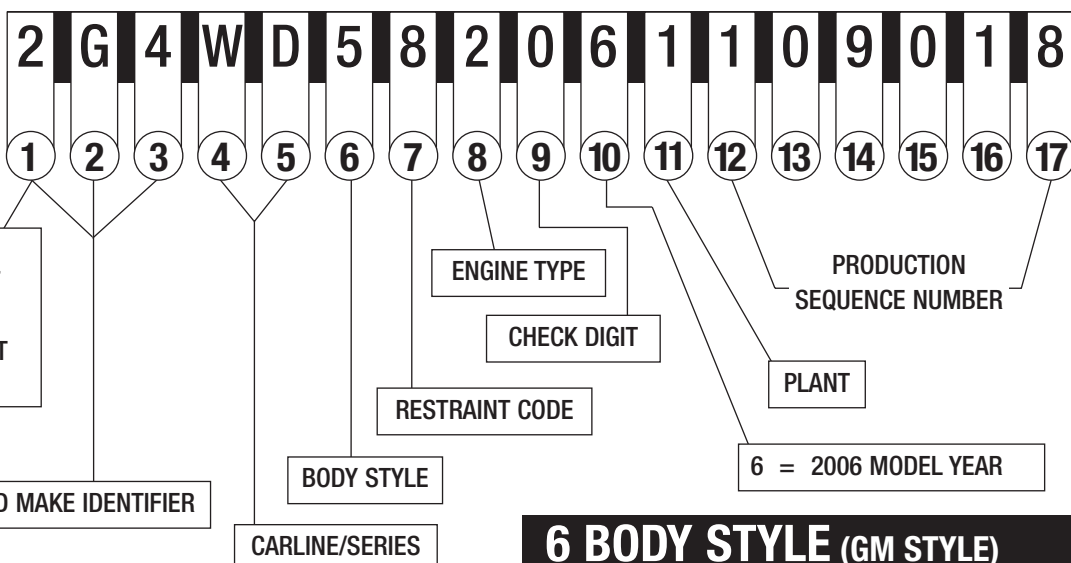




# 2006 PASSENGER CAR VIN SYSTEM

TYPICAL VIN

POSITION NO.



- 1,5 = U.S. BUILT
- 2 = CANADIAN BUILT
- 3 = MEXICO BUILT
- 6 = AUSTRALIA BUILT
- K = S. KOREA BUILT

WORLD MAKE IDENTIFIER

BODY STYLE

CARLINE/SERIES

ENGINE TYPE

CHECK DIGIT

RESTRAINT CODE

PRODUCTION SEQUENCE NUMBER

PLANT

6 = 2006 MODEL YEAR

## 1-3 WORLD MAKE IDENTIFIER

- |  |                            |
|--|----------------------------|
| <b>1 - CHEVROLET</b><br>1G1, 2G1, 3G1, KL1         | <b>6 - CADILLAC</b><br>1G6 |
| <b>2 - PONTIAC</b><br>1G2, 2G2, 3G2, 5Y2, 6G2, KL2 | <b>8 - SATURN</b><br>1G8   |
| <b>4 - BUICK</b><br>1G4, 2G4, 3G4                  |                            |

## 4-5 CARLINE/SERIES

- |   |   |
|---|---|
| <b>CHEVROLET</b><br>A/J - COBALT BASE<br>A/K - COBALT LEV 1 – ALL MODELS<br>A/L - COBALT LEV 2 – ALL MODELS<br>A/M - COBALT LEV 3 – ALL MODELS<br>A/P - COBALT LEV 4 – SPORT COUPE SS<br>A/Z - COBALT LEV 2 – LUXURY EDITION<br>J/D - OPTRA<br>J/K - OPTRA LS<br>M/D - MATIZ<br>T/D - AVEO BASE/LS<br>T/G - AVEO LT<br>U/D - U100<br>V/B - EPICA LS<br>V/D - EPICA LS<br>V/P - EPICA LT<br>W/B - IMPALA LS SEDAN<br>W/C - IMPALA LT SEDAN<br>W/D - IMPALA SS SEDAN<br>W/S - IMPALA POLICE SEDAN<br>W/T - IMPALA LT 3.5 SEDAN<br>W/U - IMPALA LTZ<br>W/J - MONTE CARLO LS COUPE<br>W/K - MONTE CARLO LT COUPE<br>W/L - MONTE CARLO SS COUPE<br>W/M - MONTE CARLO LT 3.5 COUPE<br>W/N - MONTE CARLO LTZ COUPE<br>Y/Y - CORVETTE<br>Z/S - MALIBU LS<br>Z/T - MALIBU LT<br>Z/U - MALIBU LTZ<br>Z/W - MALIBU MAXX SS | <b>Z/M - G6 GTP COUPE/SEDAN/ CONVERTIBLE</b>  |
| <b>PONTIAC</b><br>A/J - PURSUIT BASE (CANADA)<br>A/L - PURSUIT LS (CANADA)<br>A/N - PURSUIT SPORT (CANADA)<br>M/B - SOLTICE CONVERTIBLE<br>S/L - VIBE, FWD<br>S/M - VIBE, AWD<br>S/N - VIBE, GT<br>T/D - WAVE<br>T/W - WAVE LT<br>W/C - GRAND PRIX GXP SEDAN<br>W/P - GRAND PRIX SEDAN<br>W/R - GRAND PRIX GT SEDAN<br>V/X - GTO<br>Z/F - G6 SE SEDAN<br>Z/G - G6 SE1 SEDAN<br>Z/H - G6 GT COUPE/SEDAN/ CONVERTIBLE   | <b>BUICK</b><br>H/D - LUCERNE CXL<br>H/P - LUCERNE CX<br>H/E - LUCERNE CXS<br>H/R - LUCERNE CXL (SPECIAL)<br>W/C - LACROSSE CX<br>W/D - LACROSSE CXL<br>W/E - LACROSSE CXS<br>W/F - ALLURE CX (CANADA ONLY)<br>W/H - ALLURE CXS (CANADA ONLY)<br>W/J - ALLURE CXL (CANADA ONLY)<br><br><b>CADILLAC</b><br>D/C - STS-V8<br>D/M - CTS<br>D/N - CTS-V<br>D/P - CTS HIGH FEATURE V6<br>D/R - CTS - RH DRIVE<br>D/W - STS<br>D/X - STS-V<br>K/D - DEVILLE<br>Y/V - XLR ROADSTER<br>Y/X - XLR-V<br><br><b>SATURN</b><br>A/F - ION LEVEL 1 SEDAN MANUAL<br>A/G - ION LEVEL 1 SEDAN AUTO<br>A/H - LEVEL I BASE<br>A/J - ION LEVEL 2 SEDAN AUTO<br>A/K - ION LEVEL 3 SEDAN MANUAL<br>A/L - ION LEVEL 3 SEDAN AUTO<br>A/M - ION LEVEL 2 COUPE MANUAL<br>A/N - ION LEVEL 2 COUPE AUTO<br>A/T - ION RED LINE COUPE<br>A/U - LEVEL II BASE<br>A/V - ION LEVEL 3 COUPE MANUAL<br>A/W - ION LEVEL 3 COUPE AUTO<br>A/X - LEVEL III BASE<br>A/Y - ION - COUPE RED LINE TUNER (HMD)<br>A/Z - ION LEVEL 2 SEDAN MANUAL |

## 6 BODY STYLE (GM STYLE)

- |   |                                  |
|---|----------------------------------|
| 1 | TWO-DOOR COUPE (27, 37, 47, 57)  |
| 2 | TWO-DOOR (07, 08, 77, 87)        |
| 3 | TWO-DOOR CONVERTIBLE (67)        |
| 5 | FOUR-DOOR SEDAN (19, 69)         |
| 6 | FOUR-DOOR SEDAN (26, 29, 48, 68) |
| 7 | FOUR-DOOR MPV (06, 46)           |
| 8 | FOUR-DOOR STATION WAGON (35)     |
| 9 | FOUR-DOOR STATION WAGON (75)     |

## 7 RESTRAINT CODES

- |   |  |
|---|--|
| 1 | DRIVER & PASSENGER INFLATABLE RESTRAINT - FRONT  |
| 2 | ACTIVE (MANUAL) BELTS W/DRIVER & PASSENGER INFLATABLE RESTRAINT - FRONT & SIDE                           |
| 3 | ACTIVE (MANUAL) BELTS W/DRIVER & PASSENGER INFLATABLE RESTRAINT - FRONT, SIDE & ROOF                     |
| 4 | ACTIVE (MANUAL) BELTS W/DRIVER & PASSENGER INFLATABLE RESTRAINT - FRONT & ROOF                           |
| 5 | ACTIVE (MANUAL) BELTS W/DRIVER & PASSENGER INFLATABLE RESTRAINT - FRONT W/OCCUPANT SENSOR                |
| 6 | ACTIVE (MANUAL) BELTS W/DRIVER & PASSENGER INFLATABLE RESTRAINT - FRONT AND SIDE & OCCUPANT SENSOR       |
| 7 | ACTIVE (MANUAL) BELTS W/DRIVER & PASSENGER INFLATABLE RESTRAINT - FRONT, SIDE AND ROOF & OCCUPANT SENSOR |
| 8 | ACTIVE (MANUAL) BELTS W/DRIVER & PASSENGER INFLATABLE RESTRAINT - FRONT AND ROOF & OCCUPANT SENSOR       |

## 8 ENGINE TYPE

CODE	ENG. OPT.	DISP.	CYL.	FUEL* SYSTEM	DIV. USAGE
A	LH2	4.6L	V8	SFI	6
B	LE5	2.4L	L4	MFI	1,2,8
C	LS4	5.3L	V8	SFI	1,2
D	LC3	4.4L	V8	MFI	1,6
E	LS7	7.0L	V8	SFI	1
F	L61	2.2L	L4	MFI	1,2,8
J	LG8	3.1L	V6	SFI	4
K	LZE	3.5L	V6	SFI	1,2
L	LNK	1.8L	L4	SFI	2
L	LBK	2.5L	L6	-	2
M	L95	1.4L	L4	MFI	1
N	LZ4	3.5L	V6	SFI	1
P	LSJ	2.0L	L4	MFI	8
R	LZ8	3.9L	V6	MFI	1
T	LP1	2.8L	V6	SFI	6
U	LS2	6.0L	V8	SFI	1,4,6
Y	LD8	4.6L	V8	SFI	2,4,6
Z	L34	2.0L	L4	MFI	1,2
1	LZ9	3.9L	V6	SFI	1
2	L26	3.8L	V6	SFI	2,4
4	L32	3.8L	V6	SFI	2
6	L91	1.6L	L4	-	1
7	LY7	3.6L	V6	SFI	4, 6
8	LX9	3.5L	V6	SFI	8
8	LV6	1.8L	L4	MFI	2
9	L37	4.6L	V6	SFI	6

**\*LEGEND**

MFI = MULTIPORT FUEL INJECTION  
SFI = SEQUENTIAL FUEL INJECTION

## 11 PLANT

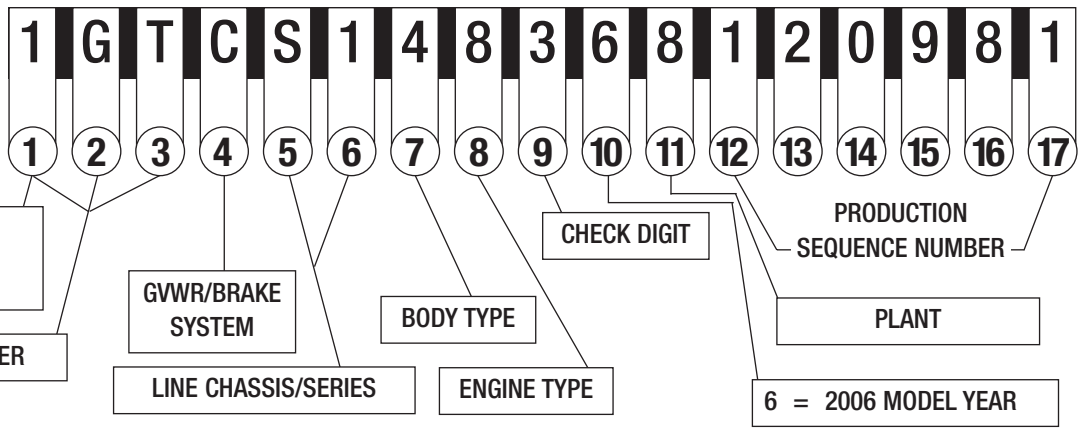
- |                              |                                |                           |                             |                         |
|------------------------------|--------------------------------|---------------------------|-----------------------------|-------------------------|
| <b>B</b> - LANSING MI        | <b>K</b> - KUNSAN S. KOREA     | <b>Y</b> - WILMINGTON DE  | <b>4</b> - ORION MI         | <b>9</b> - OSHAWA #1 ON |
| <b>B</b> - BUPYUNG S. KOREA  | <b>L</b> - ELIZABETH AUSTRALIA | <b>Z</b> - FREMONT CA     | <b>5</b> - BOWLING GREEN KY |                         |
| <b>C</b> - LANSING MI        | <b>M</b> - LANSING MI          | <b>Z</b> - SPRING HILL TN | <b>7</b> - LORDSTOWN OH     |                         |
| <b>C</b> - CHANGWON S. KOREA | <b>S</b> - RAMOS ARIZPE MEXICO | <b>0</b> - LANSING MI     | <b>8</b> - TILLSONBURG ON   |                         |
| <b>F</b> - FAIRFAX II KS     | <b>U</b> - HAMTRAMCK MI        | <b>1</b> - OSHAWA #2 ON   | (IPC)                       |                         |

# 2006 LIGHT DUTY TRUCK, MULTIPURPOSE PASSENGER VEHICLE (MPV) AND INCOMPLETE VEHICLE VIN SYSTEM

TYPICAL VIN

POSITION NO.

1, 4, 5 = U.S. BUILT  
2 = CANADIAN BUILT  
3 = MEXICO BUILT



## 1-3 WORLD MAKE IDENTIFIER

### CHEVROLET

1GB\* 2GB\* 3GB\*  
1GC 2GC 3GC  
1GA\*\* 1GN 3GN  
2CN

### GMC

1GD\* 2GD\* 3GD\*  
1GT 2GT 3GT  
1GJ\*\* 1GK 3GK

### BUICK

3G5 4GL\* 5GA

### SAAB

5S3

### SATURN

4NT\* 5GZ

### CADILLAC

1GE\* 1GY 3GY

### PONTIAC

1G5\* 1GM 2CK 3G7

### ISUZU

1GG\* 4NU

### HUMMER

5GR 5GT

\* Incomplete Vehicle

\*\* Van w/seating exceeding  
10 Passengers

## 4 GVWR/BRAKE SYSTEM

CODE	GVWR RANGE (IN POUNDS)	BRAKE SYSTEM
A	0 - 3000	HYD
B	3001 - 4000	HYD
C	4001 - 5000	HYD
D*	5001 - 6000	HYD
E**	6001 - 7000	HYD
F**	7001 - 8000	HYD
G	8001 - 9000	HYD
H	9001 - 10000	HYD
J	10001 - 14000	HYD
K	14001 - 16000	HYD
L	16001 - 19500	HYD
M	19501 - 26000	AIR/HYD

\* BUICK & CHEVROLET  
COMMERCIAL BODY/CHASSIS

\*\*CADILLAC COMMERCIAL BODY/CHASSIS

## 5-6 LINE CHASSIS/SERIES

### CHEVROLET/GMC\*

A/1 HHR LS (1/2 TON)  
A/2 HHR LT (1/2 TON)  
B/9 INCOMPLETE (CHEVROLET)  
C/1 FULL SIZE TRUCK 4x2, 1500 (1/2 TON)  
C/2 FULL SIZE TRUCK 4x2, 2500 (3/4 TON)  
C/3 FULL SIZE TRUCK 4x2, 3500 (1 TON)  
C/5 GMC 3 TON (MEX ONLY)  
C/6 FULL SIZE TRUCK 4x2, 1500 (1/2 TON) LUXURY  
C/7 FULL SIZE TRUCK 4x2, 2500 (3/4 TON) LUXURY  
C/8 FULL SIZE TRUCK 4x2, 3500 (1 TON) LUXURY  
K/1 FULL SIZE TRUCK 4x4, 1500 (1/2 TON)  
K/2 FULL SIZE TRUCK 4x4, 2500 (3/4 TON)  
K/3 FULL SIZE TRUCK 4x4, 3500 (1 TON)  
K/5 GMC 3 TON (MEX ONLY)  
K/6 FULL SIZE TRUCK 4x4, 1500 (1/2 TON) LUXURY  
K/7 FULL SIZE TRUCK 4x4, 2500 (3/4 TON) LUXURY  
K/8 FULL SIZE TRUCK 4x4, 3500 (1 TON) LUXURY  
G/1 EXPRESS, SAVANA 4x2, 1500 (1/2 TON)  
G/2 EXPRESS, SAVANA 4x2, 2500 (3/4 TON)  
G/3 EXPRESS, SAVANA 4x2, 3500 (1 TON)  
H/1 EXPRESS, SAVANA AWD, 1500 (1/2 TON)  
H/2 EXPRESS, SAVANA AWD, 2500 (3/4 TON)  
L/1 EQUINOX LS 4x2  
L/2 EQUINOX LS 4x4  
L/6 EQUINOX LT 4x2  
L/7 EQUINOX LT 4x4  
S/1 COLORADO, SSR, BLAZER, TRAILBLAZER, TRAILBLAZER (1/2 TON),  
CANYON, ENVOY, ENVOY XL 4X2 (1/2 TON), SONOMA  
S/6 ENVOY DENALI, DENALI XL 4X2 (1/2 TON)  
T/1 COLORADO, SSR, BLAZER, TRAILBLAZER, TRAILBLAZER (1/2 TON), SONOMA,  
CANYON Z85 SLE, ENVOY SLE, ENVOY XL SLE 4X4 (1/2 TON)  
T/6 ENVOY DENALI, DENALI XL 4X4 (1/2 TON)  
U/0 UPLANDER APV 4x2 RWB (1/2 TON) BASE  
U/2 UPLANDER LS APV 4x2 RWB (1/2 TON)  
U/3 UPLANDER LT APV 4x2 RWB (1/2 TON)  
V/0 UPLANDER APV 4x2 EWB (1/2 TON) BASE  
V/1 UPLANDER CARGO APV EWB (1/2 TON)  
V/2 UPLANDER LS APV EWB (1/2 TON)  
V/3 UPLANDER LT APV EWB (1/2 TON)  
X/3 UPLANDER AWD LT APV (1/2 TON)  
BUICK  
A/0 RENDEZVOUS SRV 4x2  
B/0 RENDEZVOUS SRV 4x4  
B/9 INCOMPLETE  
S/1 RAINIER 4x2

T/1 RAINIER 4x4  
V/1 TERRAZA EXT MOBILITY INCOMPLETE (1/2 TON)  
V/2 TERRAZA EXT EWB-CX (1/2 TON)  
V/3 TERRAZA EXT CXL (1/2 TON)  
X/2 TERRAZA AWD EXT CX (1/2 TON)  
X/3 TERRAZA AWD EXT CXL (1/2 TON)  
CADILLAC  
C/6 ESCALADE, 4x2 1500 (1/2 TON) LUXURY  
E/6 SRX  
K/4 ESCALADE, ESCALADE ESV, ESCALADE EXT PLATINUM EDITIONS (1/2 TON)  
LUXURY  
K/6 ESCALADE, ESCALADE ESV, ESCALADE EXT 4x4 1500 (1/2 TON) LUXURY  
K/0 INCOMPLETE (DTS HEARSE)  
K/9 INCOMPLETE (DTS LIMOUSINE)  
PONTIAC  
L/6 TORRENT FWD (1/2 TON)  
L/7 TORRENT AWD (1/2 TON)  
U/0 MONTANA SV6 RWB 4x2 (1/2 TON) BASE (US/CANADA & SAU1/MEXICO 1SB)  
U/2 MONTANA SV6 RWB 4x2 (1/2 TON) (US/CANADA & SAU2/MEXICO 1SC)  
U/3 MONTANA SV6 RWB 4x2 (1/2 TON) (US/CANADA & SAU3/MEXICO 1SE)  
V/0 MONTANA SV6 EWB 4x2 (1/2 TON) BASE 1SA (MEXICO 1SB)  
V/1 MONTANA SV6 EWB MOBILITY INCOMPLETE (1/2 TON)  
V/2 MONTANA SV6 EWB (1/2 TON) (US/CANADA 1SB, MEXICO 1SC)  
V/3 MONTANA SV6 EWB (1/2 TON) (1SB DOMESTIC)  
V/3 MONTANA SV6 EWB (US/CANADA 1SB, MEXICO 1SC)  
X/2 MONTANA SV6 AWD (1/2 TON) (US)  
X/3 MONTANA SV6 AWD (1/2 TON) (CANADA 1SC)  
SATURN  
V/0 RELAY EXT & RF2 4/2 (1/2 TON)  
V/1 RELAY EXT MOBILITY INCOMPLETE (1/2 TON)  
V/2 RELAY EXT & RF3 (1/2 TON)  
X/2 RELAY AWD & RF3 (1/2 TON)  
Z/2 VUE FWD MANUAL  
Z/3 VUE FWD AUTO  
Z/4 VUE AWD 4 CYL.  
Z/5 VUE FWD 6 CYL.  
Z/6 VUE AWD 6 CYL.  
HUMMER  
N/1 MID SIZE 4x4 SUV (1/2 TON) H3  
N/2 FULL SIZE 4x4 SUV/SUT, (3/4 TON) H2  
ISUZU  
S/1 ASCENDER 4x2 (1/2 TON)  
T/1 ASCENDER 4x4 (1/2 TON)  
SAAB  
T/1 SAAB, 9-7, SUV

\* LINE/CHASSIS DESCRIPTION INCLUDES ALL FULL SIZE CHEVROLET AND GMC TRUCK MODELS

## 7 BODY TYPE

- 0 – COMMERCIAL CHASSIS  
(CHEVROLET/BUICK/CADILLAC)
- 1 – COMMERCIAL SPECIAL AND RV CUTAWAY  
(INCLUDES CHEVROLET EXPRESS COMMERCIAL, GMC SAVANA  
CARGO SPECIAL AND CAMPER SPECIAL)
- 2 – SPORT UTILITY TRUCK  
(AVALANCHE, ESCALADE EXT, ESCALADE EXT PLATINUM, H2 SUT)
- 3 – FOUR-DOOR CAB/UTILITY  
(INCLUDES TRAILBLAZER, RAINIER, ENVOY, ENVOY XL, EQUINOX  
FULL SIZE – YUKON, TAHOE, DENALI ESCALADE, ESCALADE  
PLATINUM, H2 AND CREW CAB)
- 3 – FOUR-DOOR ALL PURPOSE VEHICLE  
(MONTANA, UPLANDER, TERRAZA, RELAY), RENDEZVOUS (SRV),  
SATURN SUV, SRX, HHR
4. – TWO-DOOR CAB  
(COLORADO, SSR, CANYON, SIERRA, SILVERADO)
- 5 – VAN  
(EXPRESS, SAVANA)
- 6 – SUBURBAN, YUKON XL, ENVOY XL, DENALI XL, TRAILBLAZER EXT,  
ASCENDER, ESCALADE ESV, ESCALADE ESV PLATINUM
- 7 – MOTOR HOME CHASSIS
- 8 – TWO-DOOR UTILITY  
(BLAZER)
- 9 – EXTENDED CAB/EXTENDED VAN  
(COLORADO, CANYON, SIERRA, SILVERADO, EXPRESS AND  
SAVANA)

## 8 ENGINE TYPE

CODE	ENG. OPT.	DISP.	CYL.	FUEL SYSTEM**
A	LH2	4.6L	V8	SFI
B	L33	5.3L	V8	SFI
D	L61	2.2L	L4	MFI
D	LBZ	6.6T	V8	DSL
E	LD9	2.4L	L4	MFI
F	LNJ	3.4L	V6	SFI
G	L18	8.1L	V8	MFI
H	LS2	6.0L	V8	SFI
L	LX9	3.5L	V6	SFI
M	LH6	5.3L	V8	SFI
N	LQ9	6.0L	V8	MFI
P	LE5	2.4L	L4	MFI
R	L31	5.7L	V8	CPI
S	LL8	4.2L	L6	MFI
T	LM7	5.3L	V8	MFI
U	LQ4	6.0L	V8	MFI
V	LR4	4.8L	V8	MFI
W	LMN	2.0L	L4	CPI
X	LU3	4.3L	V6	MFI
Y*	LD8	4.6L	V8	MFI
Z	L59	5.3L	V8	MFI
1	LZ9	3.9L	V6	SFI
2	LLY	6.6T	V8	DSL
4	L66	3.5L	V6	MFI
5	LLW	2.0T	L4	CPI
6	L52	3.5L	L5	MFI
7	LY7	3.6L	V6	SFI
8	LK5	2.8L	L4	MFI
9	LM8	3.2L	V6	MFI
9*	L37	4.6L	V8	MFI

\* USED ONLY IN BUICK, CHEVROLET & CADILLAC  
PASSENGER CAR – DERIVED INCOMPLETE VEHICLES

\*\* DSL = DIESEL, MFI = MULTIPOINT FUEL INJECTION.  
CPI = CENTRAL PORT INJECTION, T = TURBO  
SFI = SEQUENTIAL FUEL INJECTION



# 2006 MEDIUM DUTY TRUCK AND INCOMPLETE VEHICLE VIN SYSTEM

TYPICAL VIN

POSITION NO.

1, 4 = U.S. BUILT  
2 = CANADIAN BUILT  
J = JAPAN BUILT

WORLD MAKE IDENTIFIER

SERIES

GVWR/BRAKE SYSTEM

TRUCK LINE & CAB TYPE

CHASSIS TYPE

CHECK DIGIT

ENGINE TYPE

PRODUCTION SEQUENCE NUMBER

PLANT

6 = 2006 MODEL YEAR

## 1-3 WORLD MAKE IDENTIFIER

### -CHEVROLET

1GC 2GC  
1GB\* 2GB\*  
4KB\* J8B\*

### -GMC

1GT 2GT  
1GD\* 2GD\*  
4KD\* J8D\*

### -ISUZU

4GT\* 4KL JAL

\* Incomplete Vehicle

## 5 SERIES

4 – 4500 SERIES (C4/W4)

5 – 5500 SERIES (C5/W5)

6 – 6500 SERIES (C6(H6\*)/T6F)

7 – 7500 SERIES (B7/C7(H7\*)/D7/T7F/W7)

8 – 8500 SERIES (C8(H8\*)/T8F)

\* H6, H7, H8 ARE IDENTIFIERS FOR C6, C7, C8 MODELS W/ISUZU NAMEPLATE CONVERSION OPTION Z89.

## 6 TRUCK LINE & CAB TYPE (MODEL)

A – FORWARD/TILTMMASTER MEDIUM, TILT, 72.0 BBC (W5)

B – FORWARD/TILTMMASTER MEDIUM, TILT, 67.0 BBC (W4)

E – C SERIES (H SERIES), CREW CAB (C4E – C8E)

C – C SERIES (H SERIES), CONVENTIONAL CAB (C4C – C8C)

V – C SERIES (H SERIES), CUTAWAY COMMERCIAL CAB (C4V – C8V)

U – C SERIES (H SERIES), CUTAWAY MOTORHOME (C4U/C5U)

J – W SERIES NPR/NPQ NON-TILT CAB, 108.0 BBC (W4/W5)

F – T SERIES TILT CAB, 86.0 BBC (T6F – T8F)

BBC = BUMPER TO BACK OF CAB

## 4 GVWR/BRAKE SYSTEM

CODE	GVWR RANGE (IN POUNDS)	BRAKE SYST.
A	9001 - 10,000	HYD
B	10,001 - 14,000	HYD
C	14,001 - 16,000	HYD
D	14,001 - 16,000	AIR
E	16,001 - 19,500	HYD
F	16,001 - 19,500	AIR
G	19,501 - 23,500	HYD
H	19,501 - 23,500	AIR
J	23,501 - 26,000	HYD
K	23,501 - 26,000	AIR
L	26,001 - 33,000	HYD
M	26,001 - 33,000	AIR
N	33,001 - 40,500	HYD
P	33,001 - 40,500	AIR
R	40,501 - 48,500	HYD
S	40,501 - 48,500	AIR
T	48,501 - 58,000	AIR
V	58,001 - 69,500	AIR
X	GLIDER KIT	—

## 7 CHASSIS TYPE

0 – GLIDER KIT

1 – 4 X 2 (2 AXLES - 1 DRIVING)

3 – 4 X 4 (2 AXLES - 2 DRIVING)

4 – 6 X 4 (3 AXLES - 2 DRIVING)

## 8 ENGINE TYPE

C – CAT 7.2L L6 TURBO ELECTRONIC (LG5)

G – GM 8.1L V8 MFI GASOLINE (L18)

X – GLIDER KIT LESS ENGINE

2 – 6.6L V8 DI TURBO DIESEL, DURAMAX (LLY)

3 – 7.8L L6 DI TURBO DIESEL, I/C, DURAMAX (LG4)

4\* – ISUZU 4.75L L4 4HE1-XS I/C TURBO DIESEL (1C3)

5\* – ISUZU 4.75L L4 4HE1-XN I/C TURBO DIESEL (1C2)

6\* – ISUZU 5.2L L4 I/C TURBO DIESEL (1L5)

\* CODES 4, 5 AND 6 ARE FOR ISUZU/GM ENGINES USED BY ISUZU/GM ORDERED VEHICLES BUILT BY ISUZU

## 11 PLANT

B - BALTIMORE	MD	L - LANSING	MI	1 - WENTZVILLE	MO
B - LANSING	MI	M - TOLUCA	MEXICO	2 - MORAINÉ	OH
D - DORAVILLE	GA	R - ARLINGTON	TX	3 - KAWASAKI	JAPAN
E - PONTIAC	MI	S - RAMOS ARIZPE	MEXICO	6 - INGERSOLL	ON
F - FLINT	MI	S - SPRINGHILL	TN	6 - OKLAHOMA CITY	OK
G - SILAO	MEXICO	T - SHREVEPORT	LA	7 - FUJISAWA	JAPAN
H - MISHAWAKA	IN	Z - FORT WAYNE	IN	8 - SHREVEPORT	LA
J - JANESVILLE	WI	0 - LANSING	MI	8 - TILLSONBURG	ON
K - LINDEN	NJ	1 - OSHAWA	ON	(IPC)	