


SERVICE
**TRUCK
V.I.N.
DATA
ON
REVERSE
SIDE**

General Motors 1973 Passenger V.I.N. System

EXAMPLE V.I.N.*
1 N 6 9 R 3 S 1 0 0 0 0 1
**DIGIT
N°**
DIVISION CODE
1
2
3
4
5
6
7
8
9
10
11
12
13
SERIES
BODY TYPE
ENGINE CODE
PLANT CODE
SEQUENTIAL SERIAL NUMBER
LAST DIGIT OF MODEL YEAR
1 DIVISION CODE

- 1—Chevrolet
- 2—Pontiac
- 3—Oldsmobile
- 4—Buick
- 5—GMC Truck
- 6—Cadillac
- 7—GM of Canada

2 SERIES OLDSMOBILE

- B—Omega
- F—Cutlass
- G—Cutlass S
- J—Cutlass Supreme
- L—Delta 88
- N—Delta 88 Royale
- Q—Custom Cruiser
- R—Custom Cruiser
- T—98
- V—Luxury 98
- X—Regency 98
- Y—Toronado
- Z—Toronado Custom

2 BUICK SERIES

- D—Century
- F—Century Wagon
- H—Century Luxus
- J—Regal
- K—Century Luxus-Wagon
- L—Le Sabre
- N—Le Sabre Custom
- P—Centurion
- R—Estate Wagon
- T—Electra 225
- V—Electra 225 Cust.
- Y—Riviera

5 ENGINE CODE

	C.I.D.	N.N.P.	CRB.	EX.	DIVISION
A	140	72	1 B	S	1
B	140	85	2 B	S	1
D	250	100	1 B	S	1,2,3,4,5
F	307	115	2 B	S	1,2,5
	350	145	2 B	S	1,2,5,7
H	350	150	2 B	S	4
	350	160	2 B	S	3
J	350	175	4 B	S	4
	350	190	4 B	D	1
K	350	175	4 B	D	1,2,7
	350	180	4 B	S	3
	350	190	4 B	D	4
M	350	150	2 B	S	2
	350	200	4 B	D	3
N	350	175	2 B	D	2
P	400	185	2 B	D	2,7
	400	150	2 B	S	1
	400	170	2 B	S	2,7
	472	220	4 B	S	6
S	400	200	4 B	S	2,7
	500	235	4 B	S	6
	350	245	4 B	D	1
T	350	250	4 B	D	1
	400	230	4 B	D	2,7
	455	225	4 B	S	3,4
U	455	250	4 B	D	3,4
	455	260	4 B	D	4
	455	270	4 B	D	3
	455	215	4 B	S	2,7
	455	250	4 B	D	3
	455	270	4 B	D	4
X	454	215	4 B	S	1
	455	310	4 B	D	2
	454	245	4 B	D	1
	455	250	4 B	D	2,7
Z	454	275	4 B	D	1

2 SERIES CHEVROLET

- C—Chevelle, El Camino
- D—Malibu, El Camino Custom
- E—Laguna
- G—Malibu Wagon
- H—Laguna Est. Wag. Monte Carlo
- J—Biscayne
- K—Bel-Air
- L—Impala
- N—Caprice Classic
- Q—Camaro
- S—Camaro Type LT
- V—Vega
- X—Nova
- Y—Nova Custom
- Z—Corvette

PONTIAC

- D—LeMans
- F—LeMans Sport Cpe
- G—Lux. LeMans
- H—Grand Am
- K—Grand Prix, Laurentian
- L—Catalina, Parisienne
- N—Bonneville
- P—Grand Ville
- S—Firebird Std.
- T—Firebird Esprit
- U—Firebird Form.
- V—Firebird Trans Am.
- Y—Ventura
- Z—Ventura Custom

CADILLAC

- B—Fleetwood Brougham
- C—Calais
- D—Deville
- F—Fleetwood 75
- L—Eldorado
- Z—Short Sill

GMC TRUCK AND COACH

- C—Sprint
- D—Sprint Custom

*** INCLUDES EL CAMINO & SPRINT**
3 4
BODY TYPE

- 05—Panel-2 Door
- 11—Sedan-2 Door Pillar
- 15—Sta. Wagon 2 Door-2 Seat
- 17—Coupe-2 Door-Hatchback
- 23—Sedan 4 Door Aux. Seat
- 27—Coupe-2 Door Pillar
- 29—Sedan-4 Door Pillar
- 33—Sed.-4 Dr. Aux. Seat-Ctr. Pt.
- 35—Sta. Wagon 4 Door-2 Seat
- 37—Coupe-2 Door Hardtop
- 39—Sedan-4 Door Hardtop
- 40—Short Sill Cowl
- 45—Sta. Wagon-4 Door-3 Seat
- 47—Coupe-2 Door Hardtop
- 49—Sedan-4 Dr. Hardtop-Notch Back
- 50—Short Sill Cowl
- 57—Coupe-2 Door Hardtop
- 66—Sta. Wagon 4 Dr. 3 Seat 2 Way TailGate
- 67—Coupe-2 Door Convertible
- 69—Sedan 4 Door Pillar
- 77—Coupe-2 Door Pillar
- 80—Sedan-Pick Up-2 Door-2 Way TailGate
- 87—Coupe-2 Door Hardtop
- 90—Short Sill Cowl

7 PLANT CODE

A—Lakewood	GA	F—Flint (Chev)	MI	N—Norwood	OH	V—Pontiac (GMC)	MI
B—Baltimore	MD	G—Framingham	MA	P—Pontiac (Pont)	MI	W—Willow Run	MI
C—Southgate	CA	H—Flint (Buick)	MI	Q—Detroit	MI	X—Fairfax	KS
D—Doraville	GA	J—Janesville	WI	R—Arlington	TX	Y—Wilmington	DE
E—Linden	NJ	K—Leeds	MO	S—St. Louis	MO	Z—Fremont	CA
		L—Van Nuys	CA	T—Tarrytown	NY	1—Oshawa, Ont.	
		M—Lansing	MI	U—Lordstown	OH	2—Ste. Therese, Que.	

1973 LIGHT DUTY TRUCK V.I.N. DATA

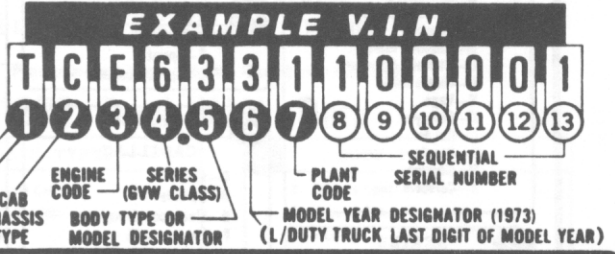
<p>2 CAB CHASSIS TYPE</p> <p>C—96" OR 106" CONVENTIONAL CAB*</p> <p>G—CHEVY VAN AND SPORT VAN VANDURA AND RALLY WAGON</p> <p>K—106" CONVENTIONAL CAB 4 x 4*</p> <p>P—FORWARD CONTROL</p> <p>*INCLUDING BLAZER, JIMMY AND SUBURBAN</p> <p>*C/KP 20-25 & 30-35 (EXCEPT SUBURBANS). **P30-35 only.</p>	<p>3 ENGINE CODE</p> <p>C.I.D. N.H.P. CARB.</p> <p>M 110 75 2 BBL</p> <p>Q 250 100 1 BBL</p> <p>T 292 130 1 BBL</p> <p>X 307 115 2 BBL</p> <p>130*</p> <p>Y 350 155 4 BBL</p> <p>Z 454 240 4 BBL</p> <p>250**</p>	<p>4 SERIES</p> <p>1—½ TON</p> <p>2—¾ TON</p> <p>3—1 TON</p> <p>5—VAN & PANEL</p> <p>6—SPORT VAN, RALLY WAGON, & SUBURBAN</p> <p>7—MOTOR HOME CHASSIS</p> <p>8—BLAZER, JIMMY UTILITY</p>	<p>5 BODY TYPE</p> <p>2—CHASSIS COWL</p> <p>3—CHASSIS CAB</p> <p>4—CAB & PICK-UP BOX</p>
--	--	---	---

7 PLANT CODE

A—Lakewood GA	F—Flint (Chev) MI	S—St. Louis MO	V—Pontiac (GMC) MI
B—Baltimore MD	J—Janesville WI	U—Lordstown OH	Z—Fremont CA
			1—Oshawa, Ont.



General Motors Trucks V.I.N. System



1973 MEDIUM & HEAVY DUTY V.I.N. DATA

<p>2 CAB CHASSIS TYPE</p> <p>C—96" OR 106" CONVENTIONAL CAB*</p> <p>D—54" ALUMINUM TILT TANDEM</p> <p>F—54" ALUMINUM TILT</p> <p>H—92" CONVENTIONAL CAB</p> <p>J—92" CONVENTIONAL CAB TANDEM</p> <p>M—96" OR 114" CONVENTIONAL CAB TANDEM</p> <p>P—FORWARD CONTROL</p> <p>R—SCHOOL BUS — REAR ENGINE</p> <p>S—SCHOOL BUS CHASSIS</p> <p>T—72" STEEL TILT CAB</p> <p>W—72" STEEL TILT CAB TANDEM</p>	<p>3 ENGINE CODE</p> <p>B—CUMMINS DIESEL — V8</p> <p>C—CUMMINS DIESEL — L6</p> <p>E—V8 GAS</p> <p>G—GMC V6 DIESEL</p> <p>H—8V71 DIESEL</p> <p>I—6—71 DIESEL</p> <p>M—GMC VG GAS</p> <p>N—CUMMINS DIESEL — L6</p> <p>P—12V71 DIESEL</p> <p>S—SIX CYLINDER GAS</p> <p>V—6V53 DIESEL</p> <p>W—6V71 DIESEL</p>	<p>4 SERIES</p> <p>7—2½ TON</p> <p>5—1½ TON</p> <p>8—3 TON</p> <p>6—2 TON</p> <p>9—3½ TON</p> <p>5 BODY TYPE</p> <p>2—CHASSIS COWL</p> <p>3—CHASSIS CAB</p> <p>● DIGITS 4 & 5 WILL BE USED AS A SERIES DESIGNATOR FOR 80 SERIES VEHICLES.</p>
--	---	---

6 MODEL YEAR DESIGNATOR

3—CHEVROLET 50 SERIES THROUGH 60 SERIES	0—CHEVROLET 70 — 90 SERIES
—CANADIAN BUILT GMC SCHOOL BUS	T—GMC 50 THROUGH 60 SERIES EXCEPT CANADIAN BUILT GMC
A—GMC DC92, DH92, DI92, DN92, FC92, FH92, F192, FN92, HN90, JN90	—HM73, JM73, JV83, RM72, TM73, WM73
D—GMC HE90, HI90, HV73, JE90, JI90, JV73, MH90, TE90, TV73	W—GMC DB92, FB92, JB90, MB90, MC90, TW90, WW90
	Y—GMC DP92, HC90, HH90, JC90, JH90
	Z—HM88

General Motors of Canada Ltd.
 Product Service Dept.
 LITHO IN CANADA (Rev. 9/72)