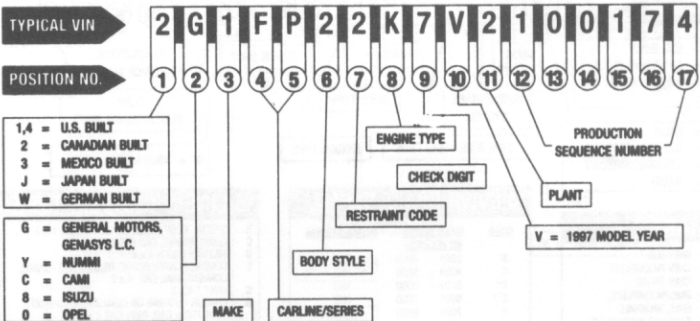




1997 PASSENGER CAR VIN SYSTEM



3 MAKE

- | | | |
|------------------------------|----------------------|------------------|
| 1 - CHEVROLET | 5 - ELECTRIC VEHICLE | 6 - CADILLAC |
| 2 - PONTIAC | | 7 - GM OF CANADA |
| 3 - OLDSMOBILE, TOYOTA (4G3) | | 8 - SATURN |
| 4 - BUICK | | |

6 BODY STYLE (GM STYLE)

- | | |
|---|---------------------------------|
| 1 | TWO-DOOR COUPE (27, 37, 47, 57) |
| 2 | TWO-DOOR (07, 08, 77, 87) |
| 3 | TWO-DOOR CONVERTIBLE (67) |
| 5 | FOUR-DOOR SEDAN (19, 69) |
| 6 | FOUR-DOOR (29, 68) |
| 8 | FOUR-DOOR STATION WAGON (35) |

4-5 CARLINE/SERIES

- | | |
|----------------------------------|----------------------------|
| CHEVROLET | BUICK |
| F/P - CAMARO SPORT COUPE & CONV. | CAU - PARK AVENUE-ULTRA |
| J/C - CAVALIER, RS | C/W - PARK AVENUE |
| J/F - CAVALIER Z24, LS & CONV. | G/D - RIVIERA |
| J/G - TOYOTA (SEDAN) | H/P - LE SABRE CUSTOM |
| J/H - TOYOTA (COUPE & SEDAN) | H/R - LE SABRE LIMITED |
| M/R - GEO METRO & METRO LSI | N/J - SKYLARK |
| N/D - MALIBU | W/B - REGAL LS SEDAN |
| N/E - MALIBU LS | W/F - REGAL GS SEDAN |
| S/K - GEO PRIZM, LSI | W/S - CENTURY CUSTOM |
| W/L - LUMINA LS | W/Y - CENTURY LIMITED |
| W/N - LUMINA LTZ | CADILLAC |
| W/W - MONTE-CARLO LS | EA - ELDORADO |
| W/X - MONTE CARLO Z34 | E/T - ELDORADO TOURING |
| Y/Y - CORVETTE & CONV. | K/D - DEVILLE |
| PONTIAC | K/E - DEVILLE D'ELEGANCE |
| F/S - FIREBIRD & CONV. | K/F - CONCOURS |
| F/V - FORMULA/TRANS AM & CONV. | K/S - SEVILLE |
| H/X - BONNEVILLE SE | K/Y - SEVILLE TOURING |
| H/Z - BONNEVILLE SSE/SSEI | W/R - CATERA |
| J/B - SUNFIRE SE & CONV. | SATURN |
| J/D - SUNFIRE GT | Z/E - SC1 COUPE |
| N/E - GRAND AM SE | Z/F - SC1 COUPE |
| N/W - GRAND AM GT | - SL SEDAN |
| W/J - GRAND PRIX SE | Z/G - SC2 COUPE |
| W/P - GRAND PRIX GT | - SW1 WAGON |
| OLDSMOBILE | - SL1 SEDAN |
| G/R - AURORA | Z/H - SC2 COUPE |
| H/C - REGENCY | - SW1 WAGON |
| H/N - EIGHTY EIGHT | - SL1 SEDAN |
| H/Y - LSS | Z/J - SW2 WAGON |
| N/B - CUTLASS | - SL2 SEDAN |
| N/G - CUTLASS | Z/K - SW2 WAGON |
| N/L - ACHIEVA SL & SC | - SL2 SEDAN |
| W/H - CUTLASS SUPREME SL | GM ELECTRIC VEHICLE |
| | P/X - EV ₁ |
| | GM OF CANADA |
| | M/R - FIREFY |

7 RESTRAINT CODES

- | | |
|---|---|
| 2 | ACTIVE (MANUAL) BELTS W/DRIVER & PASSENGER INFLATABLE RESTRAINT SYSTEM (FRONTAL) |
| 4 | ACTIVE (MANUAL) BELTS W/DRIVER & PASSENGER INFLATABLE RESTRAINTS (FRONTAL & SIDE) |

8 ENGINE TYPE

CODE	ENG. OPT.	DISP.	CYL.	FUEL* SYSTEM	DIV. USAGE	PROD. IN*
C	L47	4.0L	V8	MFI	3	U
G	LS1	5.7L	V8	MFI	1	U
K	L36	3.8L	V6	MFI	1,2,3,4	U
M	L82	3.1L	V6	MFI	1,2,3,4	U,C
P	LT1	5.7L	V8	MFI	1,2	U
R	L81	3.0L	V6	MFI	6	G
T	LD9	2.4L	L4	MFI	1,2,3,4,BJ	U
X	LQ1	3.4L	V6	MFI	1	C
Y	LD8	4.6L	V8	MFI	6	U
1	L67	3.8L	V6	MFI	2,3,4	U
4	LN2	2.2L	L4	MFI	1,2	U
5	LN1	102KW	312V	ELECTRIC	GMEV	U
6	LP2	1.0L	L3	TBI	1,7	J
6	L01	1.6L	L4	MFI	1	J
7	LL0	1.9L	L4	MFI	8	U
8	LV6	1.8L	L4	MFI	1	J
8	L24	1.9L	L4	MFI	8	U
9	L72	1.3L	L4	MFI	1,7	J
9	L37	4.6L	V8	MFI	6	U

*LEGEND

- | | |
|-------------|--------------------------------|
| U = U.S. | MFI = MULTIPORT FUEL INJECTION |
| C = CANADA | TBI = THROTTLE BODY INJECTION |
| J = JAPAN | BJ = TOYOTA BADGED J-CAR |
| G = GERMANY | |

11 PLANT

B BALTIMORE (T&B)	MD	F FLINT (T&B)	MI	S RAMOS ARIZPE	MEXCO	1 OSHAWA (T&B)	ON	6 INGERSOLL	ON
B LANING (GENASYS)	MI	G SILAO	MEXCO	T SHREVEPORT	LA	1 OSHAWA #2	ON	6 OKLAHOMA CITY	OK
C LANING	MI	H FLINT	MI	U HAMTRACK	MI	1 WENTZVILLE (T&B)	MO	7 LORDSTOWN	OH
C CHARLOTTE (T&B)	MI	J JAMESVILLE (T&B)	WI	Y WILMINGTON	DE	2 MORAIN (T&B)	OH	7 FUJISAWA	JAPAN
D DORAVILLE	GA	K LINDEN (T&B)	NJ	Z FREMONT	CA	2 STE THERESE	PQ	8 SHREVEPORT	LA
E PONTIAC EAST (T&B)	MI	M LANSING	MI	Z SPRING HILL	TN	3 DETROIT (T&B)	MI	(T&B)	
F FAIRFAX II	KS	M TOLUCA	MEXCO	Z FORT WAYNE (T&B)	IN	3 KAWASAKI	JAPAN	8 TILLSONBURG	ON
		R ARLINGTON	TX			4 ORION	MI	(CANEXPO)	
		R RUSSELSHEIM	GER	O LANING	MI	5 BOWLING GREEN	KY	9 OSHAWA #1	ON

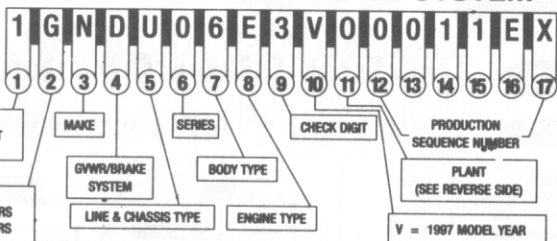


1997 LIGHT DUTY TRUCK, MULTIPURPOSE PASSENGER VEHICLE (MPV) AND INCOMPLETE VEHICLE VIN SYSTEM

TYPICAL VIN

POSITION NO.

- 1, 4 = U.S. BUILT
2 = CANADIAN BUILT
3 = MEXICO BUILT
- C = CAMI
G = GENERAL MOTORS
S = SPARTAN MOTORS
8 = ISUZU



3 MAKE

- A - CHEV BUS *
- B - CHEV INCOMPLETE
- C - CHEV TRUCK
- D - GMC INCOMPLETE
- E - CADILLAC INCOMPLETE
- H - OLDSMOBILE MPV
- J - GMC BUS *
- K - GMC MPV
- L - BUICK INCOMPLETE
- M - PONTIAC MPV
- N - CHEV MPV
- T - GMC TRUCK
- 9 - SPARTAN MOTOR HOME
- * VAN WITH 4TH SEAT

6 SERIES

- 0 - ALL PURPOSE VEHICLE
- 1 - 1/2 TON
- 2 - 3/4 TON
- 3 - 1 TON
- 4 - REAR ENGINE CHASSIS
- 5 - 3 TON (MEX. ONLY)
- 9 - SPECIAL CADILLAC, BUICK & CHEVROLET COMMERCIAL BODY/CHASSIS

8 ENGINE TYPE

CODE	E	F	H	J	M	N	P*	R	S	W	X	Y	4	6
ENGINE OPTION	LA1	L65	LN1	L29	L30	L19	LT1	L31	L56	L35	LF6	L57	LN2	LO1
DISPL. (L)	3.4	6.5T	85KW	7.4	5.0	7.4	5.7	6.5T	4.3	4.3	6.5	2.2	1.6	
CYLINDERS	V6	V8	312V	V8	V8	V8	V8	V8	V6	V6	V6	V8	L4	L4
FUEL SYSTEM **	MFI	DSL	ELECTRIC	MFI	CPI	TBI	MFI	CPI	DSL	CPI	MFI	DSL	MFI	MFI
PRODUCED IN **	U	U	U	U	U	U	U	U	U	U	U	U	U	J

* LT1: USED ONLY IN BUICK, CHEVROLET & CADILLAC PASSENGER CAR - DERIVED INCOMPLETE VEHICLES.
** LEGEND: U = U.S., J = JAPAN, M = MEXICO, DSL = DIESEL
TBI = THROTTLE BODY INJECTION, MFI = MULTIPOINT FUEL INJECTION, CPI = CENTRAL PORT INJECTION, T = TURBO

4 GVWR/BRAKE SYSTEM

CODE	GVWR RANGE (LB POUNDS)	BRAKE SYSTEM
B	3001 - 4000	HYD
C	4001 - 5000	HYD
D*	5001 - 6000	HYD
E	6001 - 7000	HYD
F**	7001 - 8000	HYD
G	8001 - 9000	HYD
H	9001 - 10000	HYD
J	10001 - 14000	HYD
K	14001 - 16000	HYD
L	16001 - 19500	HYD
M	19501 - 26000	AIR/HYD

* BUICK & CHEVROLET COMMERCIAL BODY/CHASSIS
** CADILLAC COMMERCIAL BODY/CHASSIS - FWD FUNERAL COACH

5 LINE & CHASSIS TYPE

- B - SPECIAL BODY (BUICK OR CHEVROLET) 4x2
 - C - CONVENTIONAL CAB GMT400 * 4x2
 - D - MILITARY TRUCK 4x4
 - E - COMPACT CAB/ELECTRIC TRUCK (FWD) - SMALL CONVENTIONAL CAB 4x2
 - G - VAN ** 4x2
 - H - CHASSIS CUTAWAY/SPECIAL BODY FROM CAD. PASS CAR (FWD) 4x2
 - J - COMPACT CAB 4x4
 - K - CONVENTIONAL CAB GMT 400 * 4x4
 - L - SMALL VAN ** 4x4
 - M - SMALL VAN ** 4x2
 - P - FORWARD CONTROL 4x2
 - S - SMALL CONVENTIONAL CAB * 4x2
 - T - SMALL CONVENTIONAL CAB * 4x4
 - U - ALL PURPOSE VEHICLE (APV) 4x2
 - X - ALL PURPOSE VEHICLE (EXT) 4x2
- * INCLUDING BLAZER, JIMMY, SUBURBAN, TAHOE, YUKON AND BRAVADA
** CHEVY VAN, EXPRESS AND ASTRO
GMC SAVANA AND SAFARI

7 BODY TYPE

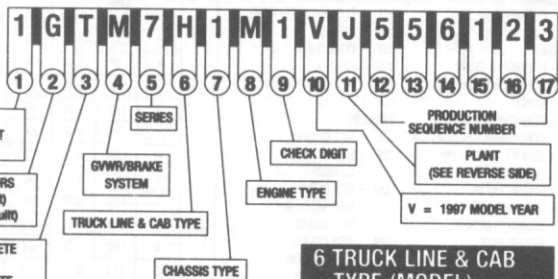
- 0 - CHASSIS ONLY
 - 0 - CADILLAC, BUICK & CHEVROLET COMMERCIAL BODY/CHASSIS
 - 1 - COMMERCIAL, SPECIAL & RV CUTAWAY *
 - 2 - FORWARD CONTROL
 - 3 - FOUR-DOOR CAB/UTILITY
 - 3 - FOUR-DOOR ALL PURPOSE VEHICLE
 - 4 - TWO-DOOR CAB
 - 5 - VAN
 - 6 - ALL PURPOSE VEHICLE
 - 6 - SUBURBAN
 - 7 - MOTOR HOME
 - 8 - CHASSIS
 - 8 - TWO-DOOR UTILITY
 - 9 - EXTENDED CABVAN
- * INCLUDES GMC SAVANA SPECIAL AND CAMPER SPECIAL

1997 MEDIUM DUTY TRUCK AND INCOMPLETE VEHICLE VIN SYSTEM

TYPICAL VIN

POSITION NO.

- 1, 4 = U.S. BUILT
2 = CANADIAN BUILT
J = JAPAN BUILT
- G = GENERAL MOTORS
K = ISUZU (U.S. Built)
8 = ISUZU (Japan Built)
- B = CHEV INCOMPLETE
C = CHEV TRUCK
D = GMC INCOMPLETE
T = GMC TRUCK



4 GVWR/BRAKE SYSTEM

CODE	GVWR RANGE (LB POUNDS)	BRAKE SYST.
A	9001 - 10,000	HYD
B	10,001 - 14,000	HYD
C	14,001 - 16,000	HYD
D	14,001 - 16,000	AIR
E	16,001 - 19,500	HYD
F	16,001 - 19,500	AIR
G	19,501 - 23,500	HYD
H	19,501 - 23,500	AIR
J	23,501 - 26,000	HYD
K	23,501 - 26,000	AIR
L	26,001 - 33,000	HYD
M	26,001 - 33,000	AIR
N	33,001 - 40,500	HYD
P	33,001 - 40,500	AIR
R	40,501 - 48,500	HYD
S	40,501 - 48,500	AIR
T	48,501 - 58,000	AIR
V	58,001 - 69,500	AIR
X	GLIDER KIT	—

5 SERIES

- 4 - 4500 SERIES (W4)
- 5 - 5000 SERIES (CS/W5)
- 6 - 6000 SERIES (CS/FB6)
- 7 - 7000 SERIES (B7/C7/D7/FB7)

7 CHASSIS TYPE

- 0 - GLIDER KIT
- 1 - 4 X 2
- 4 - 6 X 4

6 TRUCK LINE & CAB TYPE (MODEL)

- A - FORWARD/ULTMASTER MEDIUM, TLI, 72.0 BBC (W9)
 - B - FORWARD/ULTMASTER MEDIUM, TLI, 67.9 BBC (W4)
 - C - T55-T85 MEDIUM, TLI, 86.0 BBC (FB7)
 - D - C SERIES, (SPECIAL EQUIP OPTION) CREW CAB (C7)
 - H - C SERIES CONVENTIONAL CAB, 106.75 BBC (CB7)
 - T - BUS/COMMERCIAL CHASSIS CONVL (B7)
- BBC = BUMPER TO BACK OF CAB

8 ENGINE TYPE

- F - GM 6.5L V8 DIESEL (L65)
- J - CAT 6.6L 3116 DIESEL (LJ0)
- M - GM 7.0L V8 TBI GASOLINE (LJ0)
- P - GM 6.0L V8 TBI GASOLINE (L30)
- R - GM 5.7L V8 CFI GASOLINE (L31)
- X - GLIDER KIT LESS ENGINE
- 2 - ISUZU 7.1L 6HE1TC DIESEL (LJ4)