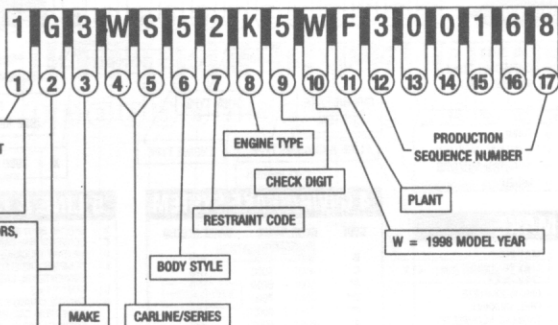


GM

1998 PASSENGER CAR VIN SYSTEM

TYPICAL VIN

POSITION NO.



1,4 = U.S. BUILT
2 = CANADIAN BUILT
3 = MEXICO BUILT
J = JAPAN BUILT
W = GERMAN BUILT

G = GENERAL MOTORS,
GENASYS L.C.
Y = NUMMI
C = CAMI
8 = ISUZU
0 = OPEL

MAKE

CARLINE/SERIES

RESTRAINT CODE

CHECK DIGIT

ENGINE TYPE

PRODUCTION
SEQUENCE NUMBER

PLANT

W = 1998 MODEL YEAR

3 MAKE

1 - CHEVROLET 5 - ELECTRIC VEHICLE 6 - CADILLAC
2 - PONTIAC 7 - GM OF CANADA
3 - OLDSMOBILE 8 - SATURN
4 - BUICK

4-5 CARLINE/SERIES

CHEVROLET
F/P - CAMARO SPORT COUPE & CONV.
J/C - CAVALIER
J/F - CAVALIER Z24, LS & CONV.
J/G - TOYOTA (SEDAN)
J/H - TOYOTA (COUPE & SEDAN)
M/R - METRO & METRO LSI
N/D - MALIBU
N/E - MALIBU LS
S/K - PRIZM, LSI
W/L - LUMINA LS
W/N - LUMINA LTZ
W/W - MONTE CARLO LS.
W/X - MONTE CARLO Z34
Y/Y - CORVETTE & CONV.

PONTIAC
F/S - FIREBIRD & CONV.
F/V - FORMULA/TRANS AM & CONV.
H/X - BONNEVILLE SE
H/Z - BONNEVILLE SSE
J/B - SUNFIRE SE & CONV.
J/D - SUNFIRE GT
N/E - GRAND AM SE
N/W - GRAND AM GT
W/J - GRAND PRX SE
W/P - GRAND PRX GT

OLDSMOBILE
G/R - AURORA
H/C - REGENCY
H/N - EIGHTY EIGHT LS
H/Y - LSS
N/B - CUTLASS GL
N/G - CUTLASS GLS
N/L - ACHIEVA SL & SC
W/H - INTRIGUE
W/S - INTRIGUE GL
W/X - INTRIGUE GLS

BUICK
C/U - PARK AVENUE-ULTRA
C/W - PARK AVENUE
G/D - RMIERA
H/P - LE SABRE CUSTOM
H/R - LE SABRE LIMITED
N/J - SKYLARK
W/B - REGAL LS SEDAN
W/F - REGAL GS SEDAN
W/S - CENTURY CUSTOM
W/Y - CENTURY LIMITED

CADILLAC
E/L - ELDERADO
E/T - ELDERADO ETC
K/D - DEVILLE
K/E - DEVILLE D'ELEGANCE
K/F - CONCOURS (DEVILLE)
K/S - SEVILLE SLS
K/Y - SEVILLE STS
V/R - CATERA

SATURN
Z/E - SC1 COUPE
Z/F - SC1 COUPE
- SL SEDAN
Z/G - SC2 SEDAN
- SW1 WAGON
- SL1 SEDAN
Z/H - SC2 COUPE
- SW1 WAGON
- SL1 SEDAN
Z/J - SW2 WAGON
- SL2 SEDAN
Z/K - SW2 WAGON
- SL2 SEDAN

GM ELECTRIC VEHICLE
P/X - EV₁

GM OF CANADA
M/R - FIREFLY

6 BODY STYLE (GM STYLE)

1 TWO-DOOR COUPE (27, 37, 47, 57)
2 TWO-DOOR (07, 08, 77, 87)
3 TWO-DOOR CONVERTIBLE (67)
5 FOUR-DOOR SEDAN (19, 69)
6 FOUR-DOOR SEDAN (29, 68)
8 FOUR-DOOR STATION WAGON (35)

7 RESTRAINT CODES

2 ACTIVE (MANUAL) BELTS W/DRIVER & PASSENGER INFLATABLE RESTRAINT SYSTEM (FRONTAL)
4 ACTIVE (MANUAL) BELTS W/DRIVER & PASSENGER INFLATABLE RESTRAINT SYSTEM (FRONTAL & SIDE)

8 ENGINE TYPE

CODE	ENG. OPT.	DISP.	CYL.	FUEL* SYSTEM	DIV. USAGE	PROD. IN*
C	L47	4.0L	V8	MFI	3	U
G	LS1	5.7L	V8	MFI	1,2	U
H	LX5	3.5L	V6	MFI	3	U
K	L36	3.8L	V6	MFI	1,2,3,4	U
M	L82	3.1L	V6	MFI	1,2,3,4	U,M
R	L81	3.0L	V6	MFI	6	G
T	LD9	2.4L	L4	MFI	1,2,3,4,BJ	U
Y	LDB	4.6L	V8	MFI	6	U
1	L67	3.8L	V6	MFI	2,3,4	U
2	LY8	1.3L	L4	MFI	1,7	J
4	LN2	2.2L	L4	MFI	1,2	U
5	LN1	102KW	312V	ELECTRIC	GMEV	U
6	LP2	1.0L	L3	TBI	1,7	J
6	LD1	1.6L	L4	MFI	1	J
7	LLD	1.9L	L4	MFI	8	U
8	LV6	1.8L	L4	MFI	1	J
8	L24	1.9L	L4	MFI	8	U
9	L37	4.6L	V8	MFI	6	U

*LEGEND

U = U.S. MFI = MULTIPORT FUEL INJECTION
C = CANADA TBI = THROTTLE BODY INJECTION
J = JAPAN BJ = TOYOTA BADGED J-CAR
G = GERMANY
M = MEXICO

11 PLANT

B - BALTIMORE (T&B)	MD	F - FLINT (T&B)	MI	S - RAMOS ARIZPE	MEXICO	1 - OSHAWA (T&B)	ON	6 - INGERSOLL	ON
B - LANSING (GENASYS)	MI	G - SLAG	MEXICO	T - SHREVEPORT	LA	1 - OSHAWA #2	ON	6 - OKLAHOMA CITY	OK
C - LANSING	MI	H - FLINT	MI	U - HAMTRAMCK	MI	1 - WENTZVILLE (T&B)	MO	7 - LORDSTOWN	OH
C - CHARLOTTE (T&B)	MI	J - JAMESVILLE (T&B)	WI	Y - WILMINGTON	DE	2 - MORAINNE (T&B)	OH	7 - FLUSAWA	JAPAN
D - DORAVILLE	GA	K - LINDEN (T&B)	NJ	Z - FREMONT	CA	2 - STE THERESE	PO	8 - SHREVEPORT	LA
E - PONTIAC EAST (T&B)	MI	M - LANSING	MI	Z - SPRING HILL	TX	3 - DETROIT (T&B)	MI	(T&B)	
F - FAIRFAX II	KS	M - TOLLUCA	MEXICO	Z - FORT WAYNE (T&B)	IN	3 - KAWASAKI	JAPAN	8 - TILLSONBURG	ON
		R - ARLINGTON	TX			4 - ORION	MI	(CAN/PO)	
		S - RUSSELSHEIM	GER	O - LANSING	MI	5 - BOWLING GREEN	KY	9 - OSHAWA #1	ON

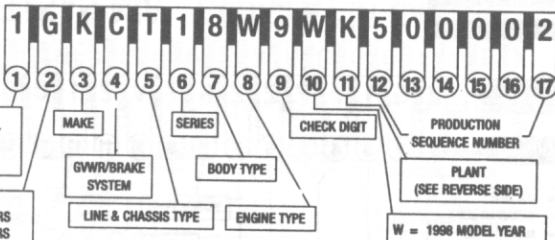
The information shown is correct at time of printing, but may be changed during model year.

GM

1998 LIGHT DUTY TRUCK, MULTIPURPOSE PASSENGER VEHICLE (MPV) AND INCOMPLETE VEHICLE VIN SYSTEM

TYPICAL VIN

POSITION NO.



1, 4 = U.S. BUILT
2 = CANADIAN BUILT
3 = MEXICO BUILT

C = CAMI
G = GENERAL MOTORS
S = SPARTAN MOTORS
8 = ISUZU

3 MAKE

- A - CHEV BUS *
- B - CHEV INCOMPLETE
- C - CHEV TRUCK
- D - GMC INCOMPLETE, OPEL, VALDHALL
- E - CADILLAC INCOMPLETE
- G - ISUZU INCOMPLETE
- H - OLDSMOBILE MPV
- J - GMC BUS *
- K - GMC MPV
- L - BUICK INCOMPLETE
- M - PONTIAC MPV
- N - CHEV MPV
- T - GMC TRUCK
- 9 - SPARTAN MOTOR HOME

* VAN WITH 4TH SEAT

4 GVWR/BRAKE SYSTEM

CODE	GVWR RANGE (IN POUNDS)	BRAKE SYSTEM
B	3001 - 4000	HYD
C	4001 - 5000	HYD
D*	5001 - 6000	HYD
E**	6001 - 7000	HYD
F	7001 - 8000	HYD
G	8001 - 9000	HYD
H	9001 - 10000	HYD
J	10001 - 14000	HYD
K	14001 - 16000	HYD
L	16001 - 19500	HYD
M	19501 - 26000	AIR/HYD

* BUICK & CHEVROLET COMMERCIAL BODY/CHASSIS
** CADILLAC COMMERCIAL BODY/CHASSIS - FWD FUNERAL COACH LIMOUSINE

5 LINE & CHASSIS TYPE

- B - SPECIAL BODY (BUICK OR CHEVROLET) 4 x 2
 - C - CONVENTIONAL CAB GMT400* 4 x 2
 - D - MILITARY TRUCK 4 x 4
 - E - COMPACT CAB/ELECTRIC TRUCK (FWD) - SMALL CONVENTIONAL CAB 4 x 2
 - G - VAN** 4 x 2
 - H - CHASSIS CUTAWAY OR COMMERCIAL SPECIAL BODY FROM CAD. PASS CAR 4 x 2
 - J - COMPACT CAB 4 x 4
 - K - CADILLAC LIMOUSINE
 - L - CONVENTIONAL CAB GMT 400* 4 x 4
 - M - SMALL VAN*** 4 x 4
 - N - SMALL VAN*** 4 x 2
 - P - FORWARD CONTROL 4 x 2
 - S - SMALL CONVENTIONAL CAB 4 x 2
 - T - SMALL CONVENTIONAL CAB 4 x 4
 - U - ALL PURPOSE VEHICLE (APV) 4 x 2
 - X - ALL PURPOSE VEHICLE (EXT) 4 x 2
- * INCLUDES BLAZER, JIMMY, SUBURBAN, TAHOE, YUKON AND BROWARD
** INCLUDES CHEVROLET VANS, EXPRESS VAN, COMMERCIAL CUTAWAY, RV CUTAWAY AND GMC SAVANA CARGO, PASSENGER, SPECIAL AND CAMPER SPECIAL
*** INCLUDES ASTRO AND SAFARI VANS

6 SERIES

- 0 - ALL PURPOSE VEHICLE
- 1 - 1/2 TON
- 2 - 3/4 TON
- 3 - 1 TON
- 4 - REAR ENGINE CHASSIS
- 5 - 3 TON (MEX. ONLY)
- 9 - SPECIAL CADILLAC, BUICK & CHEVROLET COMMERCIAL BODY/CHASSIS

7 BODY TYPE

- 0 - CHASSIS ONLY
- 0 - CADILLAC, BUICK & CHEVROLET COMMERCIAL BODY/CHASSIS
- 1 - COMMERCIAL, SPECIAL & RV CUTAWAY*
- 2 - FORWARD CONTROL
- 3 - FOUR-DOOR CAB/UTILITY
- 3 - FOUR-DOOR ALL PURPOSE VEHICLE
- 4 - TWO-DOOR CAB
- 5 - VAN
- 6 - ALL PURPOSE VEHICLE
- 6 - SUBURBAN
- 7 - MOTOR HOME CHASSIS
- 8 - TWO-DOOR UTILITY
- 9 - EXTENDED CAB/VAN

* INCLUDES GMC SAVANA SPECIAL AND CAMPER SPECIAL

8 ENGINE TYPE

CODE	E	F	H	J	M	R	S	W	X	Y	Y*	4	6
ENGINE OPTION	LA1	L65	LN1	L29	L30	L31	L56	L35	LF6	L57	LO4	LN2	LO1
DISPL. (L)	3.4	6.5T	85KW	7.4	5.0	5.7	6.5T	4.3	4.3	6.5	4.6	2.2	1.8
CYLINDERS	V6	V8	312V	V8	V8	V8	V8	V6	V6	V8	V8	L4	L4
FUEL SYSTEM**	MFI	DSL	ELECTRIC	MFI	MFI	MFI	DSL	CPI	MFI	DSL	MFI	MFI	MFI
PRODUCED IN**	U	U	U	U	U	U	U	U	U	U	U	U	J

* CADILLAC COMMERCIAL LIMOUSINE

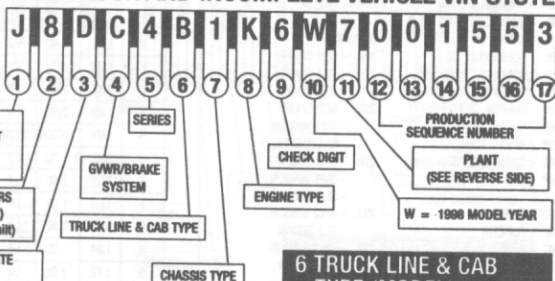
** LEGEND: U = U.S., J = JAPAN, M = MEXICO, DSL = DIESEL

TBI = THROTTLE BODY INJECTION, MFI = MULTIPORT FUEL INJECTION, CPI = CENTRAL PORT INJECTION, T = TURBO

1998 MEDIUM DUTY TRUCK AND INCOMPLETE VEHICLE VIN SYSTEM

TYPICAL VIN

POSITION NO.



1, 4 = U.S. BUILT
2 = CANADIAN BUILT
3 = MEXICAN BUILT
J = JAPAN BUILT

G = GENERAL MOTORS
K = ISUZU (U.S. Built)
8 = ISUZU (Japan Built)

B = CHEV INCOMPLETE
C = CHEV TRUCK
D = GMC INCOMPLETE
T = GMC TRUCK

4 GVWR/BRAKE SYSTEM

CODE	GVWR RANGE (IN POUNDS)	BRAKE SYST.
A	9001 - 10,000	HYD
B	10,001 - 14,000	HYD
C	14,001 - 16,000	HYD
D	14,001 - 16,000	AIR
E	16,001 - 19,500	HYD
F	16,001 - 19,500	AIR
G	19,501 - 23,500	HYD
H	19,501 - 23,500	AIR
J	23,501 - 26,000	HYD
K	23,501 - 26,000	AIR
L	26,001 - 33,000	HYD
M	26,001 - 33,000	AIR
N	33,001 - 40,500	HYD
P	33,001 - 40,500	AIR
R	40,501 - 48,500	HYD
S	40,501 - 48,500	AIR
T	48,501 - 58,000	AIR
V	58,001 - 69,500	AIR
X	GLIDER KIT	---

5 SERIES

- 4 - 4500 SERIES (W4)
- 5 - 5000 SERIES (CS/W5)
- 6 - 6000 SERIES (C6/F6S/W6)
- 7 - 7000 SERIES (B7/C7/D7/FB7/W7)

7 CHASSIS TYPE

- 0 - GLIDER KIT
- 1 - 4 X 2 (2 AXLES-1 DRIVING)
- 4 - 6 X 4 (3 AXLES-2 DRIVING)

6 TRUCK LINE & CAB TYPE (MODEL)

- A - FORWARD/TILTMASTER MEDIUM, TILT, 72.0 BBC (W5)
 - B - FORWARD/TILTMASTER MEDIUM, TILT, 67.9 BBC (W4)
 - C - T55-T85 MEDIUM, TILT, 86.0 BBC (F6/F7)
 - D - C SERIES, (SPECIAL EPOKIT OPTION) CREW CAB (C7)
 - H - C SERIES CONVENTIONAL CAB, 106.75 BBC (D6/C7)
 - T - BUS/COMMERCIAL CHASSIS COM. (B7)
- BBC = BUMPER TO BACK OF CAB

8 ENGINE TYPE

- B - GM 7.4L V8 MFI GASOLINE (L21)
- C - CAT 7.2L V8 TURBO DIESEL (L65)
- F - GM 6.5L V8 DIESEL (L65)
- J - CAT 6.0L 3116 DIESEL (JXJ)
- M - GM 7.0L V8 TBI GASOLINE (LJ0)
- P - GM 6.0L V8 TBI GASOLINE (LS0)
- R - GM 5.7L V8 CFI GASOLINE (L31)
- X - GLIDER KIT LESS ENGINE
- 2 - ISUZU 7.1L 6H11TC DIESEL (LN4)
- 3 - ISUZU 7.8L V6 D-1 TURBO DIESEL (L64)